



Canadian Made For Canadian Weather

  **Contact Us!**

[info@hytekbuidingsolutions.com](mailto:info@hytekbuidingsolutions.com)

**Alberta**



**Saskatchewan**



**British Columbia**



**Manitoba**



## Portable Steel Skid Accommodations

**Communities | Residential | Commercial  
Agricultural | Industrial | Recreational**

Hytek specializes in building custom self or non-self contained buildings on a steel skid frame for multi-purpose use, easily portable and built to withstand all of Canada's climates.

**[HYTEKBUILDINGSOLUTIONS.COM](http://HYTEKBUILDINGSOLUTIONS.COM)**

**HYTEK BUILDING SOLUTIONS**  
05/23 - VERSION 11



**Durable**

**Affordable**

**Portable**

**Customizable**

**High-Quality**



# PRIMARY SPECS



- 4 Season Capabilities
- HRV Ventilation System
- One Piece Shower or Bathtub, Toilet & Sink
- Carbon & Smoke Detectors
- Interior Pot Lights
- Exterior Power Outlets & Lighting
- Full Kitchen with Ample Storage
- Dishwasher Rough-In
- Washer & Dryer Rough-In
- 8' Deck Header
- 2x6 Exterior Walls & 2x4 Interior Walls
- 2X10 Floor Joists & Treated Sheeting
- R32 Insulated Floor Joists
- R24 Insulted Walls
- R60 Attic Insulation
- Insulated PVC Exterior Door
- Soffit, Fascia, Eavestrough & Downspouts
- Triple Pane Windows
- Engineered Portable Steel Skid Foundation
- Rodent Protection Package



**Get The  Comforts!**

**\*Upgrades Available**

See next page

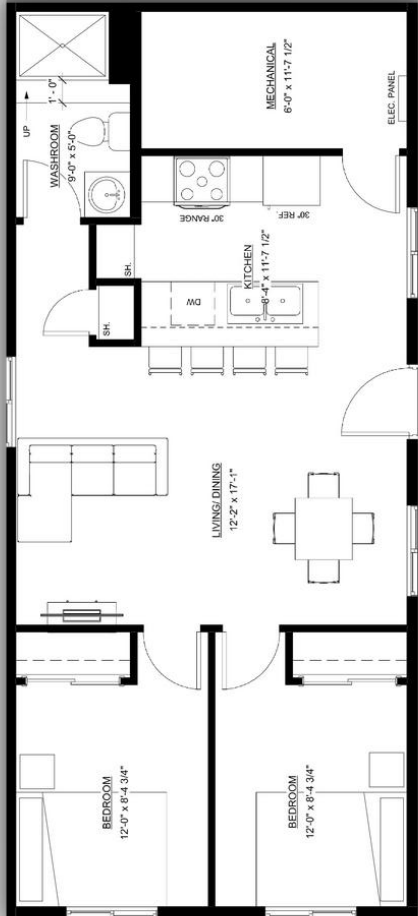


**HYTEK BUILDING SOLUTIONS**





# AVAILABLE UPGRADES



## Self-Contained Hytek Tanking System Options:

- 400 Gallon On-Board Sewer & Water System
- 200 Gallon On-Board Sewer & Water System

## Heating & Cooling Package Options:

- Electric Force Flow Heat & Thermostat (Spec)
- Wood Stove Upgrade
- Gas Furnace Upgrade
- Electric Air Conditioning & Remote Control Thermostat Upgrade

## Roofing Package Options: (Colour Options Available)

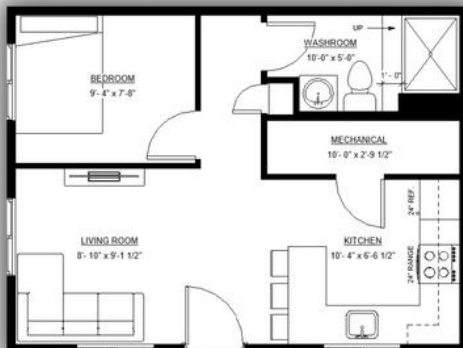
- Asphalt Shingles (Spec)
- Metal Upgrade

## Exterior Package Options: (Colour Options Available)

- Vinyl Siding (Spec)
- Metal Upgrade

## Miscellaneous Options:

- Accessible Shower
- Unit Length Deck Header



# SPECIFICATIONS

## Superior Construction

- Engineered Steel I-beam skid frame c/w D Rings
- 1/2" plywood underbelly
- Underbelly metal floor cap
- Engineered roof trusses @ 24" OC
- 2"x 4" Interior walls @ 24" OC
- 2"x 6" exterior walls @ 16" OC
- 2" x 10" floor Joists @ 16" OC
- 3/4" tongue & groove subfloor
- 7/16" wall & roof sheathing
- Insulation R - Value Floor R-32
- Insulation R - Value Walls R-24
- Insulation R - Value Roof R-60
- 6ml vapour barrier (CCSB)

## Mechanical & Plumbing

- 30 or 40 Imperial gallon electric water heater (pending size of unit)
- Electric ductless A/C or natural gas forced air furnace (either one is optional)
- HRV (Heat Recovery Ventilator) & exhaust system
- Moen single lever faucets c/w pressure balanced shower valve
- 1 piece tub/shower c/w curved rod (optional)
- 1 piece 4' shower c/w glass sliding doors
- Low Flow Rear ejection toilet
- Shut off valves at all plumbing fixtures
- Dishwasher hookup (optional)
- Washer and Dryer Hookup (optional)

## Electrical

- 100 Amp Electrical Panel (Standard)
- Electric fan forced wall heaters
- 2 Exterior GFI receptacles
- 1.5" Conduit Raceway to electrical panel for future electrical service
- GFI protected receptacles in bathroom
- GFI protected receptacles in kitchen
- AFCI Protected receptacle
- 1 Heat trace receptacle
- Smoke/Carbon Monoxide alarms
- Interior LED pot lights
- Exterior LED lights

See next page



# SPECIFICATIONS

## Maintenance Free Exteriors

- Vinyl Siding (metal siding optional)
- Tyvek House wrap
- Pre-finished 12" Eaves
- Pre-finished 6" fascia
- 36" steel insulated ext. door c/w PVC jamb
- 5" Eavestrough
- Architectural Asphalt Shingles (metal standing seam roof optional)
- PVC Triple Pane (low E) c/w venting sliders & PVC jambs

## Interior Decor

- Custom Cabinets
- Superior Vinyl Plank Flooring
- Bathroom vanity & mirror
- Weiser brushed nickel door hardware
- Berkley Contemporary interior doors
- Interior & Exterior client selections

## Warranty & Certifications

- 1 Year comprehensive
- 2 Mechanical
- 5 Year Envelope Seal
- 10 year Structural



# COMMUNITIES





Accessibility to water, sewer, or power holding you back? Hytek has solutions to make off-grid living reliable and comfortable.

- *Indigenous Communities*
- *Rural Communities*
- *Recreation Communities*
- *Veteran Communities*

We ensure a turn-key experience with each and every unit we provide.

Hytek units are a solution for affordable housing with 4 season capabilities. Self contained or non self contained water & sewer, power inside and outside of the unit with a full service kitchen and bathroom.

All units are built to last ensuring your investment holds up in our Canadian climate for years to come.

Hytek is proud to deliver housing solutions to rural, northern, and Indigenous Communities. We value our relationships with all communities across Canada.







**RESIDENTIAL**





All Hytek units are built on a steel skid for easy and safe delivery to you. The perfect asset for years to come.

- *Lake Lots/Cabins*
- *Farms/Acreages*
- *Recreational*
- *Garage*

To ensure the delivery of a great product our clients can depend on. All homes are built to residential building code.

Units have high efficiency in all four seasons with an insulated roof, floor and walls.

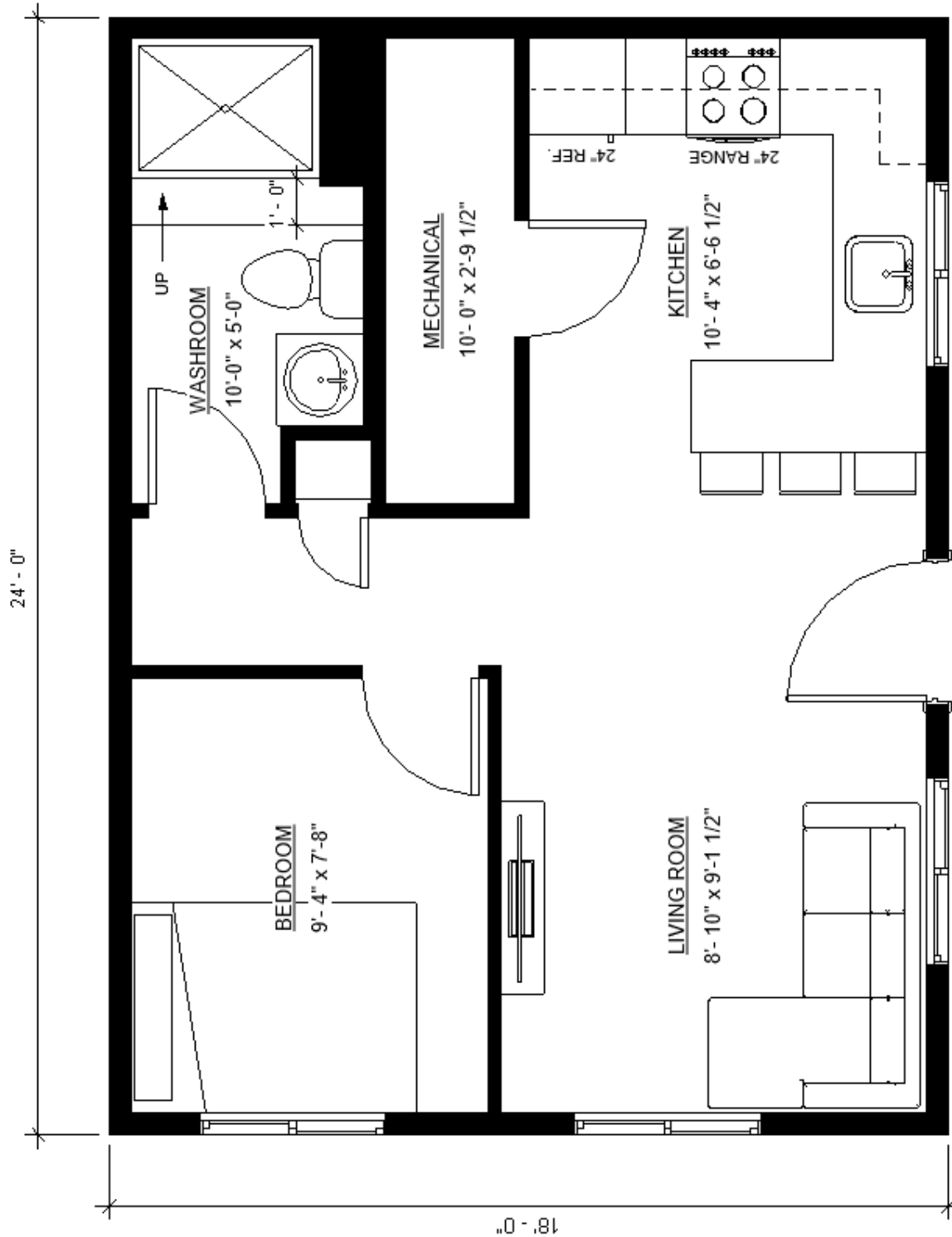
Each unit is custom a build.

Hytek is an affordable, sustainable housing solution. Whether you are downsizing, looking for a temporary housing alternative or a convenient moveable long-term solution, Hytek modulares are a flexible secure investment.



# **Alberta, Saskatchewan & Manitoba Plans**





## Small Home

**18' x 24'**

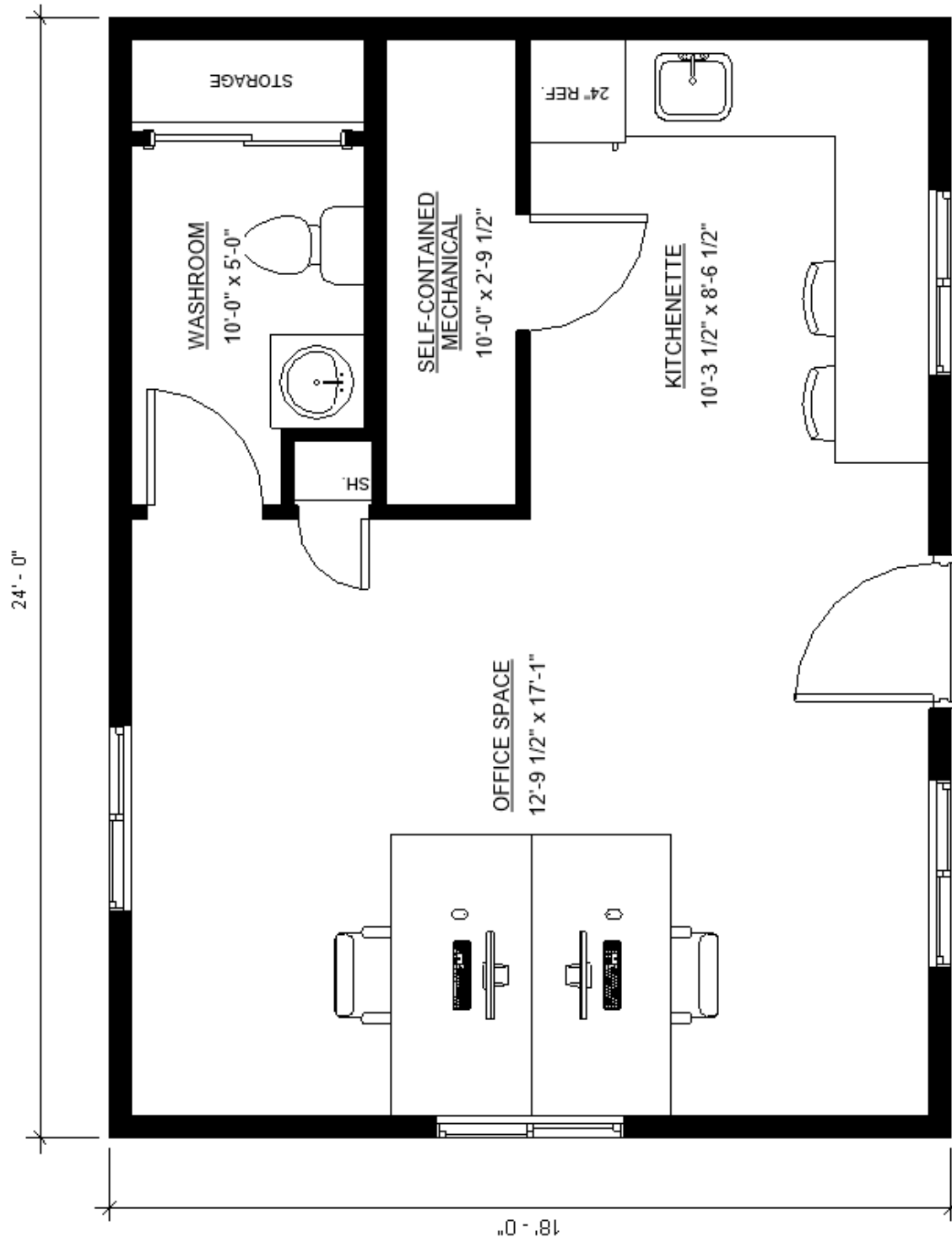
**432 sqft**



*Contact our sales team*

Small homes are not only trendy but practical with 4 season capabilities, water, sewer, power, a full washroom. This unit may look small but we have added storage solutions and a spacious cooking area for you to take advantage of. This unit is also complete with space for a 24-inch stove and fridge.





## Office Unit

18' x 24'

432 sqft



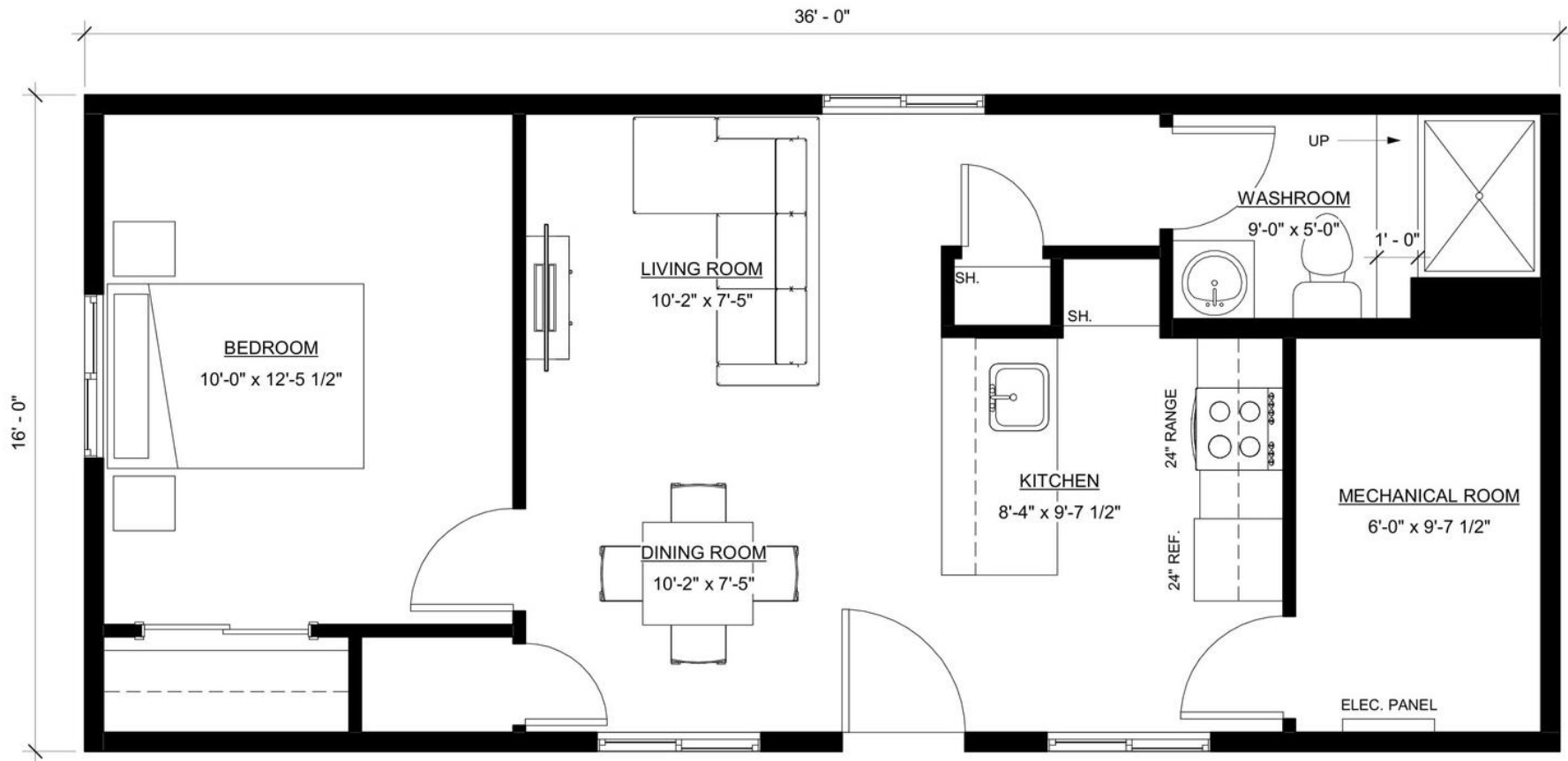
*Contact our sales team*

You never know where life will take your business, rest assured your Hytek unit will be with you every step of the way. All Hytek units are built on a steal skid for simple portability.

- Perfect for an on-site or temporary office
- They make a great asset to any business.
- Layouts to meet your business's every need.







**One Bedroom**  
**16' x 36'**  
**576 sqft**

*Contact our sales team*

Each Hytek unit is complete with an on-board shower, toilet and sink. All Hytek units can be made self contained with fresh water and waste water tanks, custom sizes are available.

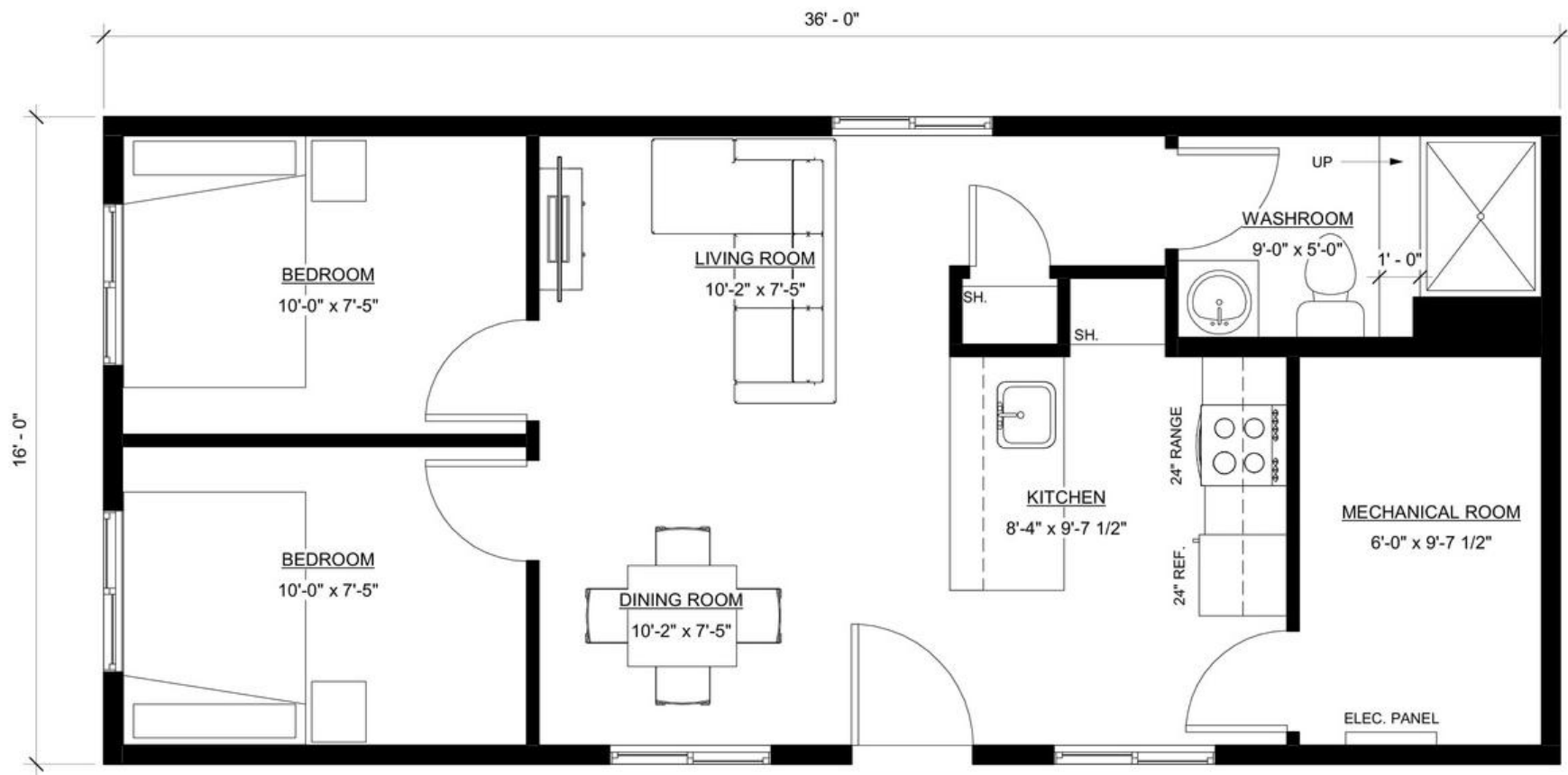
If you have your own underground septic system, we can easily connect your unit.

Rest assured, all units built to Canadian building code.









**Two Bedroom**  
**16' x 36'**  
**576 sqft**

*Contact our sales team*

Renovating or building your dream house or cabin?

You will feel right at home in with a fully functional kitchen and washroom. All Hytek steel skid accommodations are the perfect asset as you can easily sell or rent it out for others to enjoy.





**One Bedroom**  
**18' x 40'**  
**720 sqft**



Contact our sales team

Get to get those hired hands out of the house, acquire a nanny cabin or expand your resort or campground with a Hytek one bedroom accommodation. Tanking options 200 or 400 gallon self-contained.







**Two Bedroom**  
**18' x 40'**  
**720 sqft**



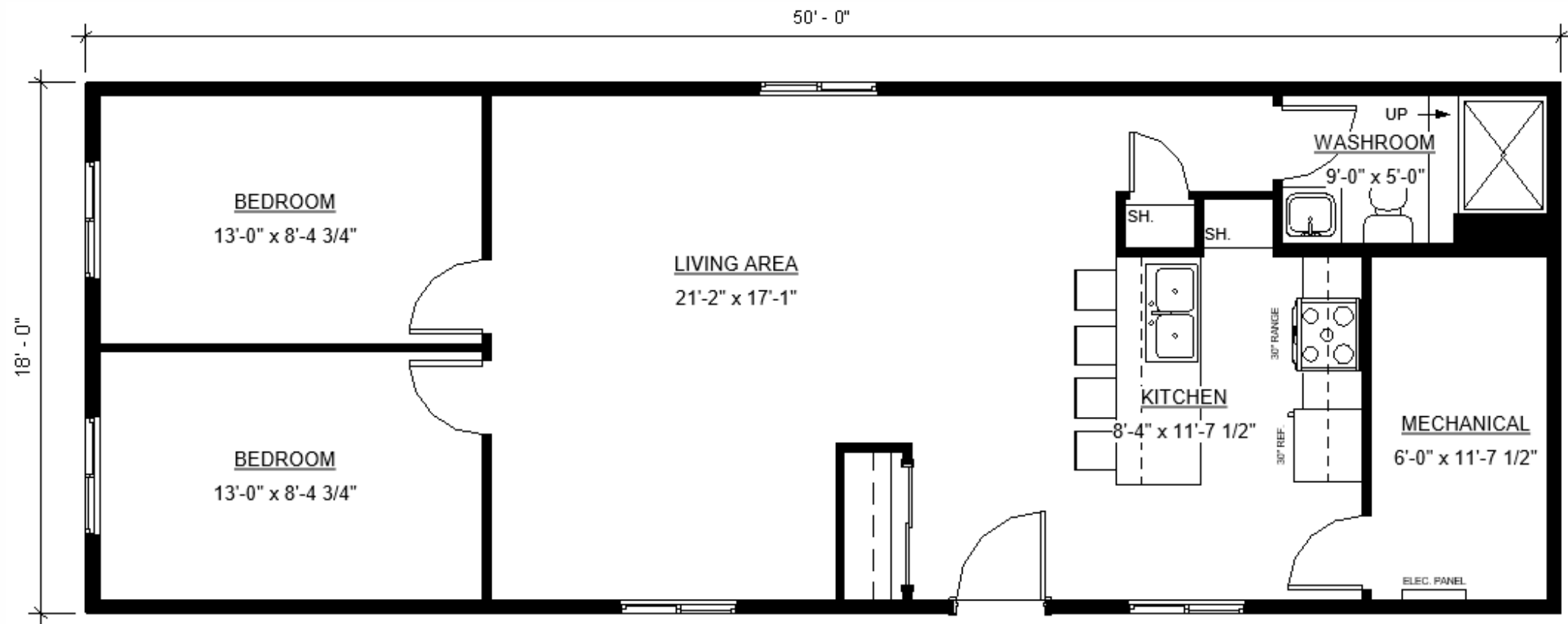
*Contact our sales team*

Hytek's Best Selling Package. Perfect for that empty lot at the lake or to make your favourite camping spot a bit more comfortable.









**Two Bedroom**  
**18' x 50'**  
**900 sqft**

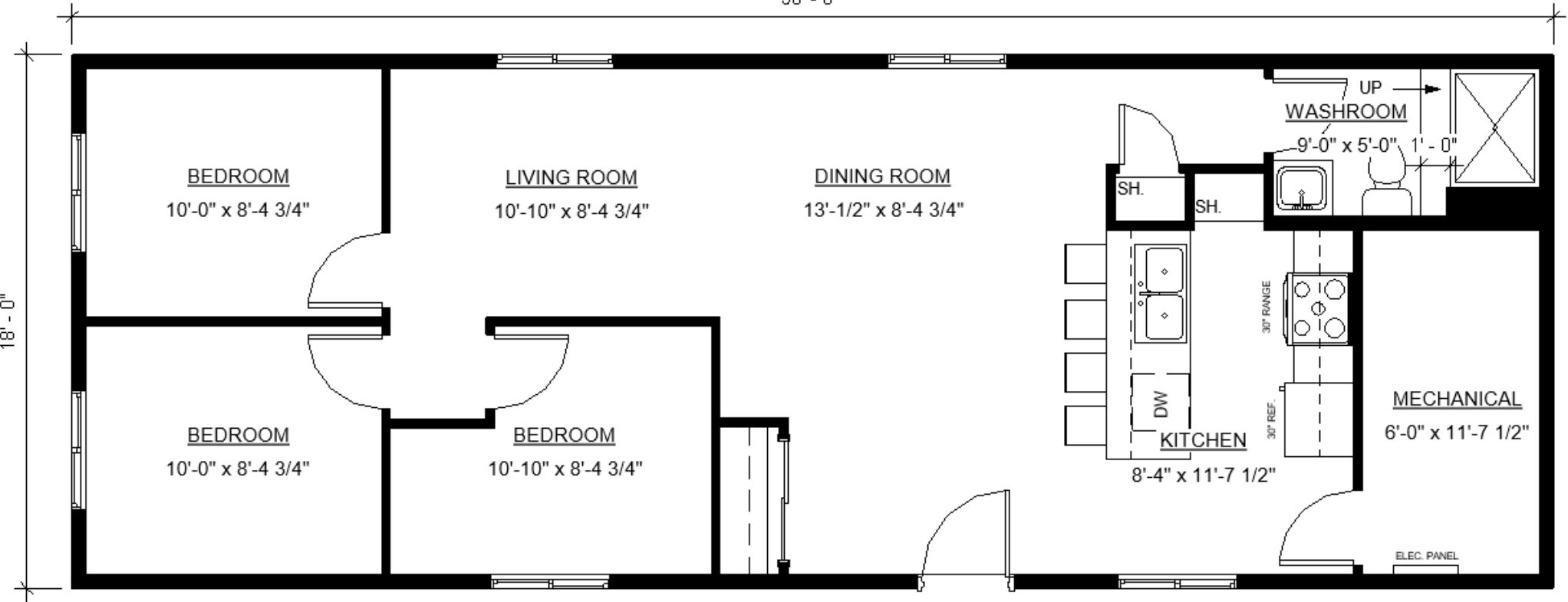


*Contact our sales team*

Spacious for the whole family. This unit has room for full size appliances. Feel right at home with additions like a wood burning stove or luxury soaker tub. A 220 force flow heat and thermostat is included in all bedrooms in all units. Fan forced heat is more efficient than conventional baseboard heating, this helps ensure 4 season capabilities for comfortable living.



50' - 0"



**Three Bedroom**  
**18' x 50'**  
**900 sqft**



*Contact our sales team*

Spacious for the whole family. This unit has room for full size appliances. Feel right at home with additions like a wood burning stove or luxury soaker tub. A 220 force flow heat and thermostat is included in all bedrooms in all units. Fan forced heat is more efficient than conventional baseboard heating, this helps ensure 4 season capabilities for comfortable living.

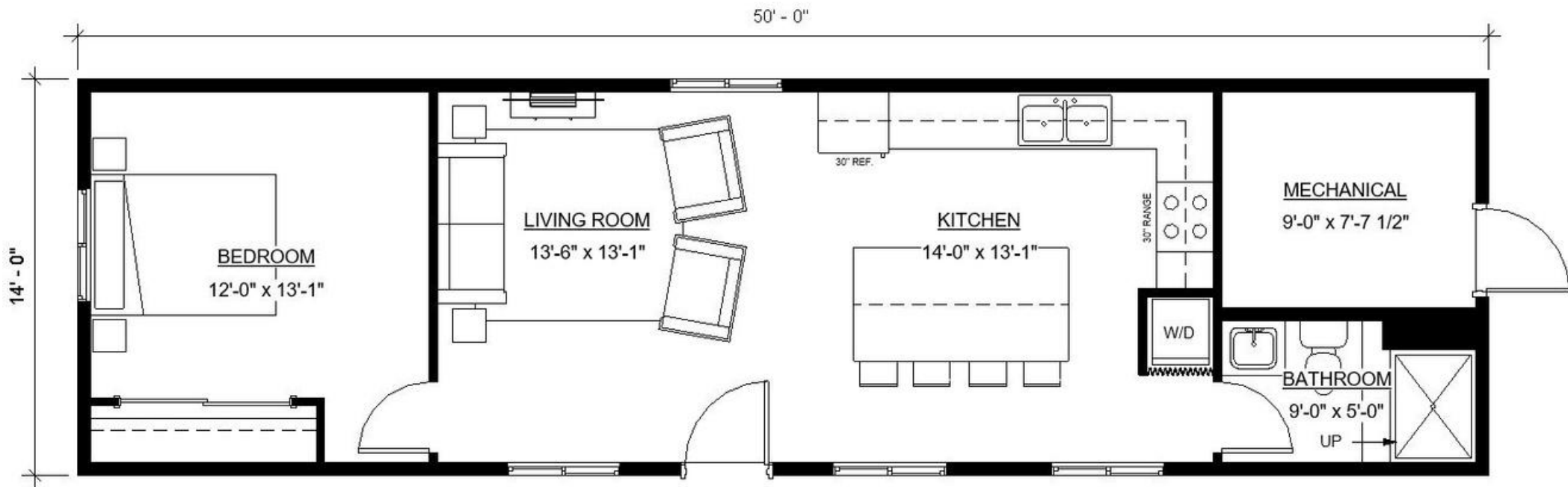






# **British Columbia Plans**





**One Bedroom**  
**14' x 50'**  
**700 sqft**

*Contact Our  
Sales Team*

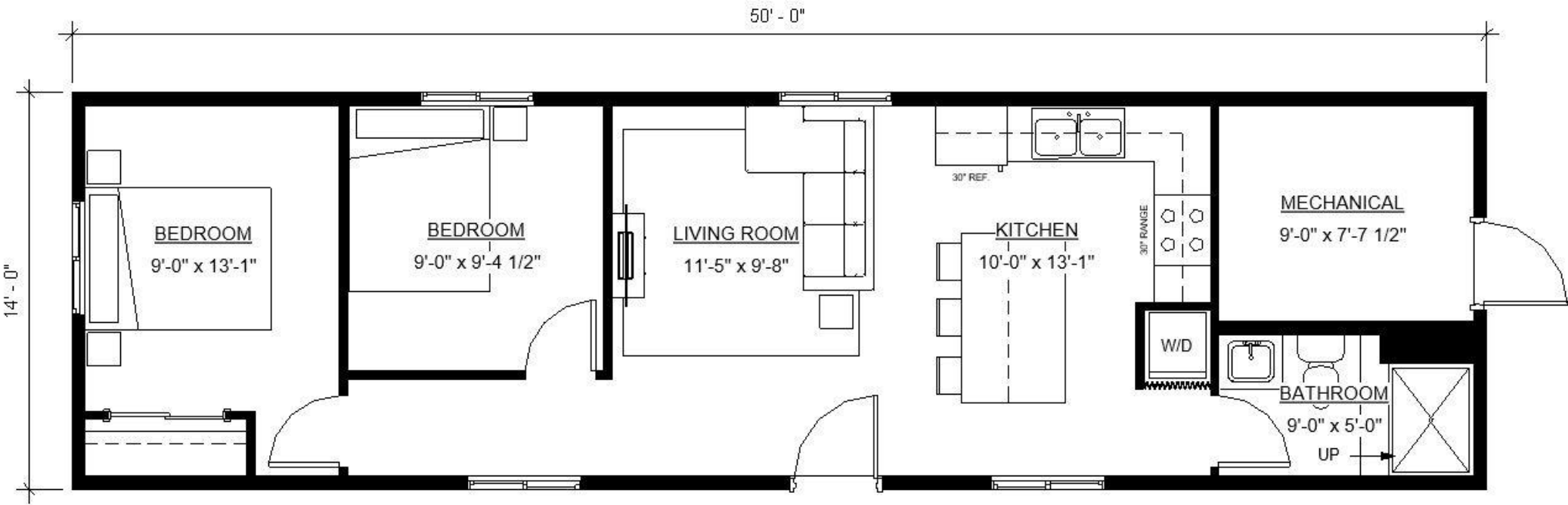
*Size adjustments if needed for  
certain locations*

Each Hytek unit is complete with an on-board shower, toilet and sink. All Hytek units can be made self contained with fresh water and waste water tanks, custom sizes are available.

If you have your own underground septic system, we can easily connect your unit.

Rest assured, all units built to Canadian building code.





**Two Bedroom**  
**14' x 50'**  
**700 sqft**

*Contact Our  
 Sales Team*

*Size adjustments if needed for  
 certain locations*

Each Hytek unit is complete with an on-board shower, toilet and sink. All Hytek units can be made self contained with fresh water and waste water tanks, custom sizes are available.

If you have your own underground septic system, we can easily connect your unit.

Rest assured, all units built to Canadian building code.







**Three Bedroom**  
**14' x 60'**  
**840 sqft**

*Contact Our  
 Sales Team*

*Size adjustments if needed for  
 certain locations*

Each Hytek unit is complete with an on-board shower, toilet and sink. All Hytek units can be made self contained with fresh water and waste water tanks, custom sizes are available.

If you have your own underground septic system, we can easily connect your unit.

Rest assured, all units built to Canadian building code.



**COMMERCIAL**





Hytek units are complete with water, sewer and power inside and outside, for reliable business operations in all four seasons.

- *Administration Offices*
- *Construction and Oil & Gas Sites*
- *Coffee Shops*
- *Post Offices*
- *Dispensaries*
- *Electric Charging Stations*

Hytek modulares provide solutions for custom office spaces in urban or rural sites. Providing solutions for small business, office space, construction sites, mining and oil & gas locations.

Have a business idea? Hytek can work with you to design an affordable and customizable space that meets your needs from start to finish. Fast turnaround and delivery to be up and running in a timeline that can't be beat.

Looking for solutions to meet the needs in your community or to replace commercial structures? Hytek can work with you to design facilities that are affordable, low maintenance and ready to open when you are.

Ask our team about financing options that relieve the stress of start up overhead.

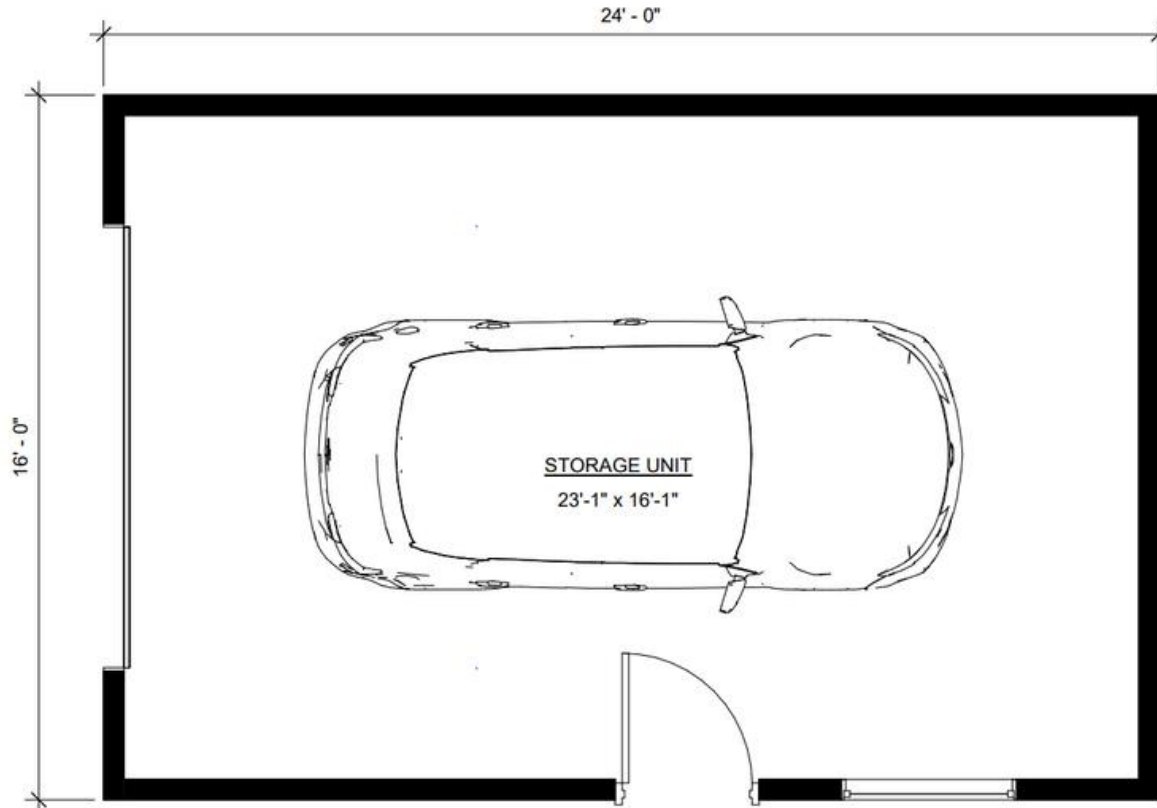






**Garage Unit**  
**16' x 24'**  
**384 sqft**

*Contact our sales team*

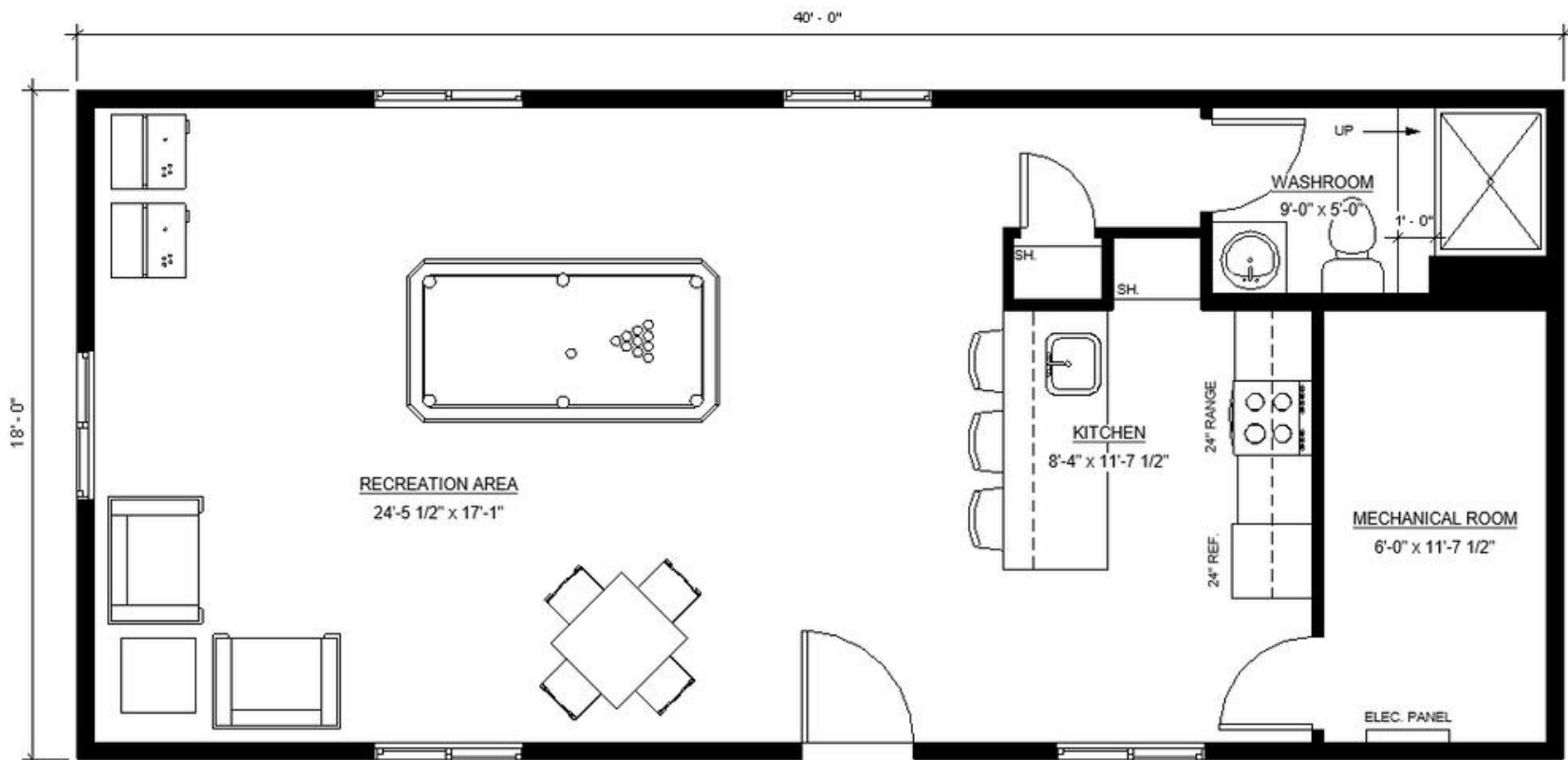






**Recreation Unit**  
**18' x 40'**  
**720 sqft**

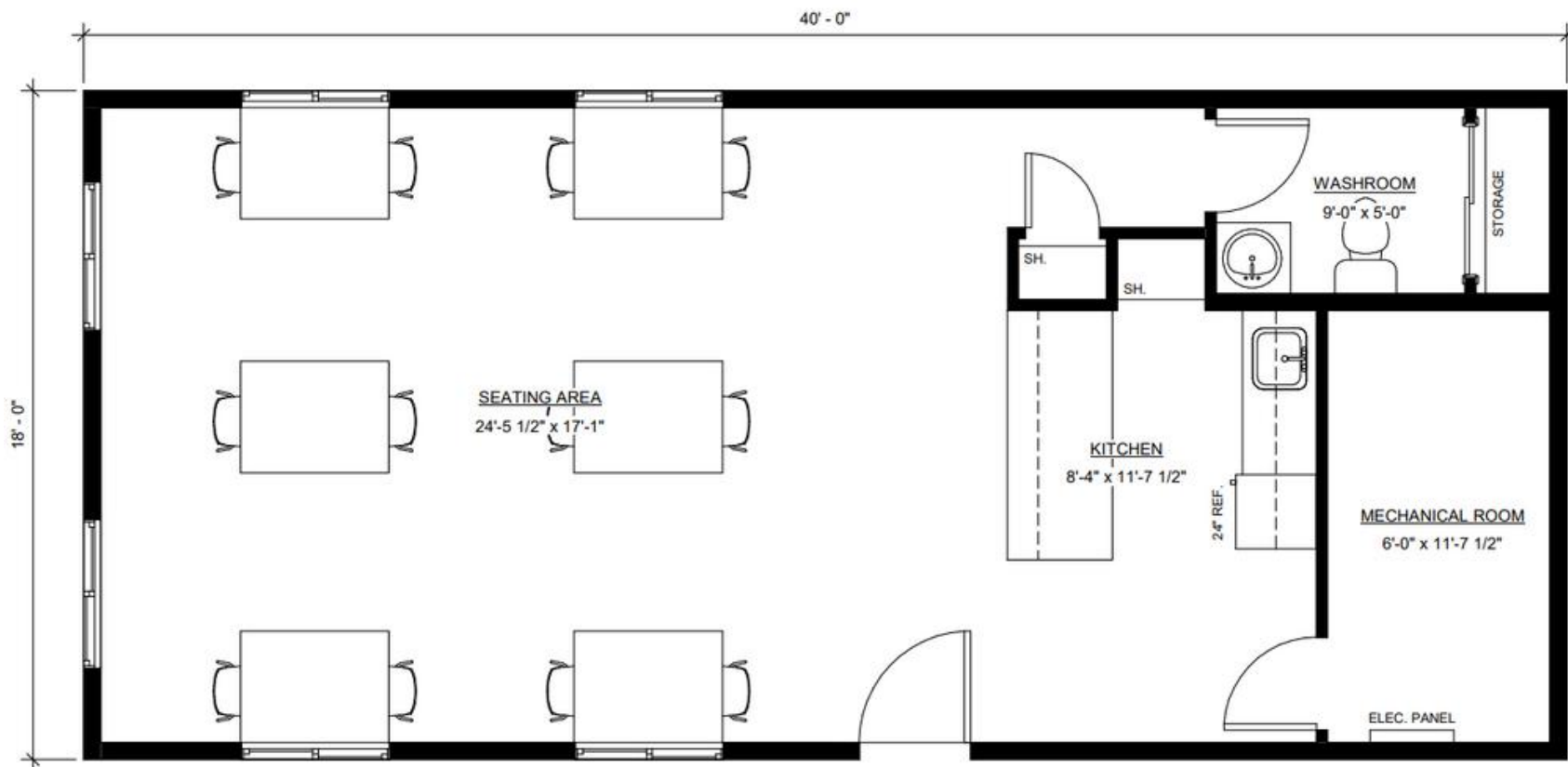
Contact our sales team





**Coffee Shop**  
**18' x 40'**  
**720 sqft**

Contact our sales team





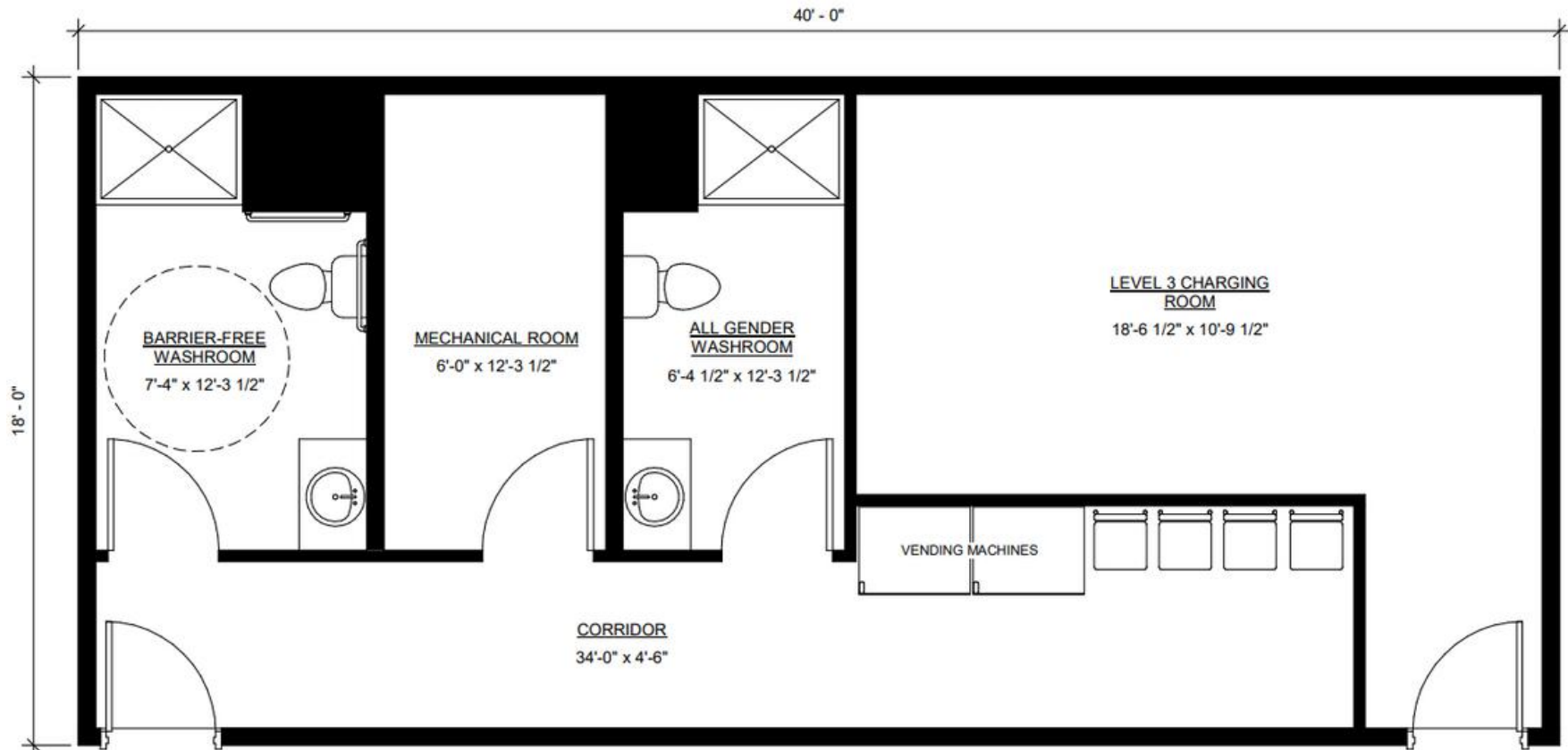


## Electric Charging Station

**18' x 40'**

**720 sqft**

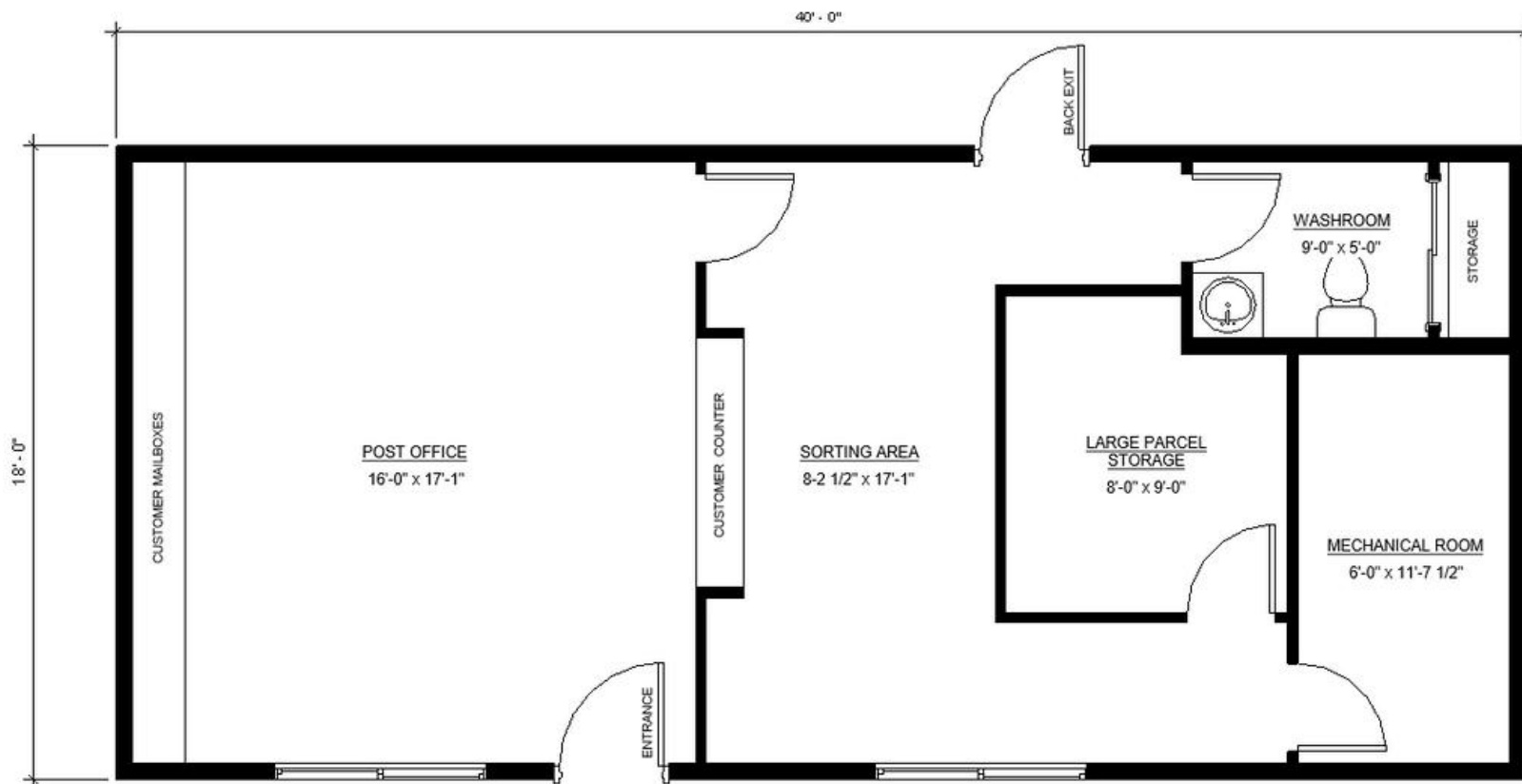
Contact our sales team





**Post Office**  
**18' x 40'**  
**720 sqft**

*Contact our sales team*

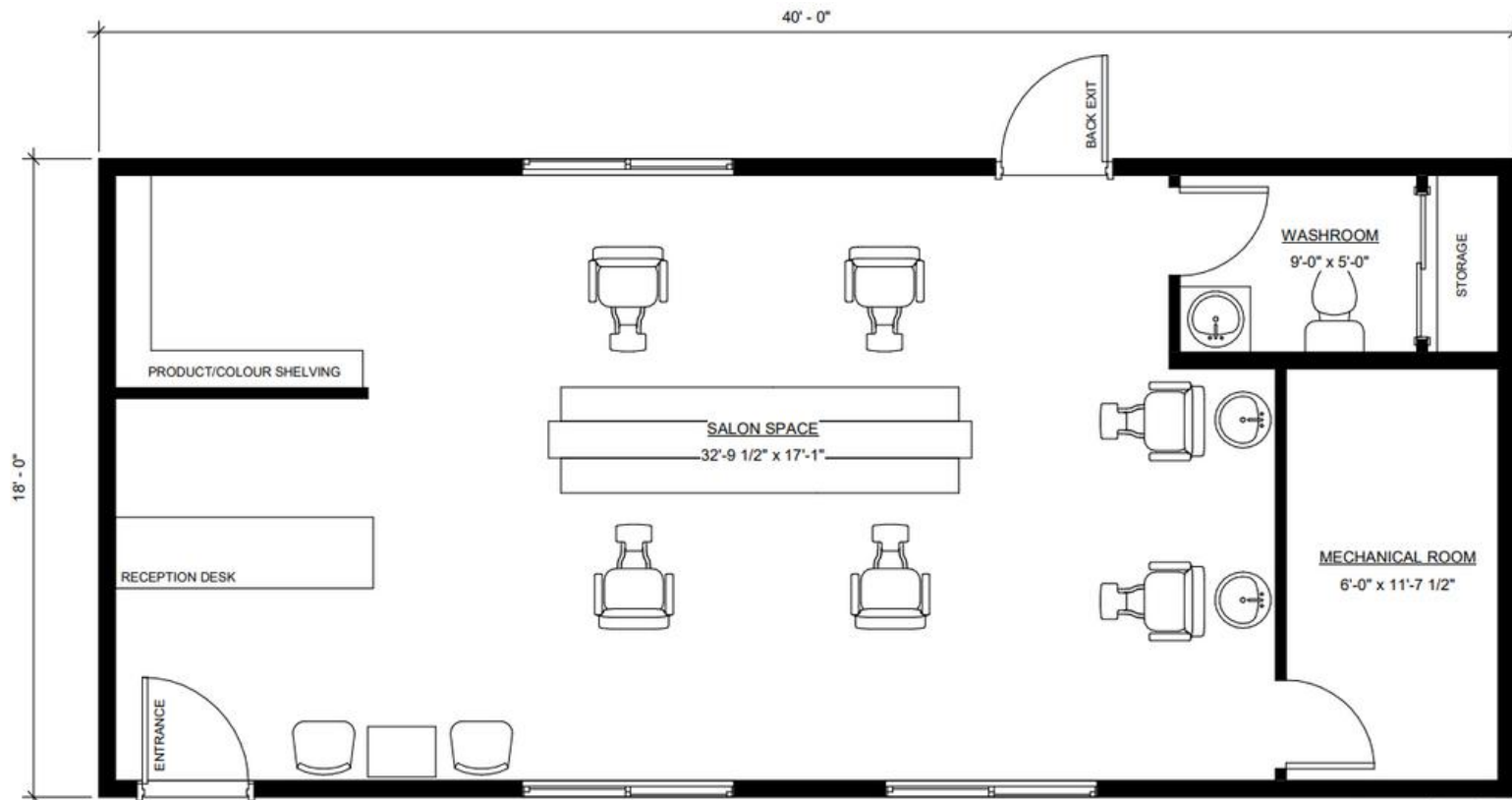






**Hair Salon**  
**18' x 40'**  
**720 sqft**

*Contact our sales team*



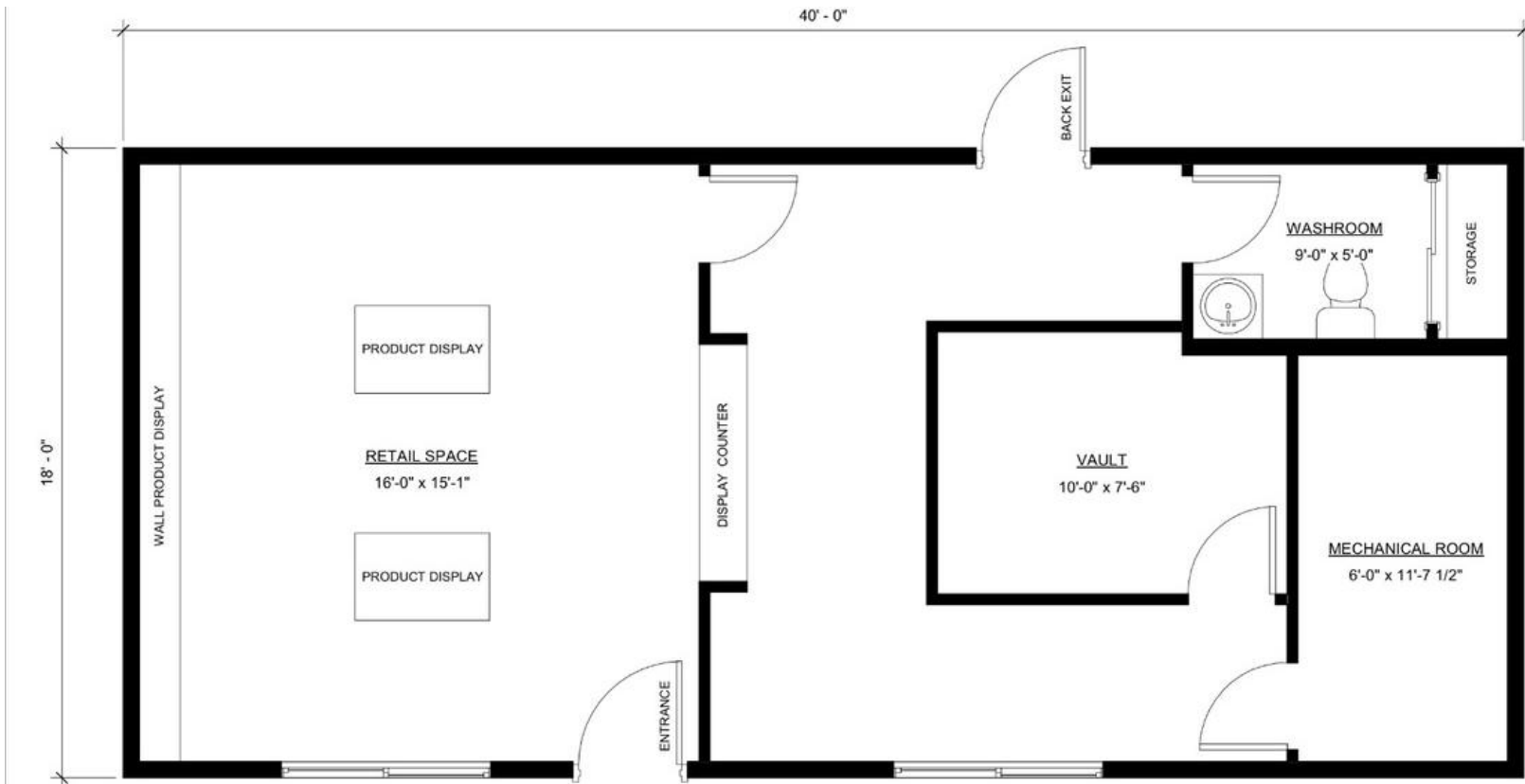


## Dispensary

**18' x 40'**

**720 sqft**

Contact our sales team

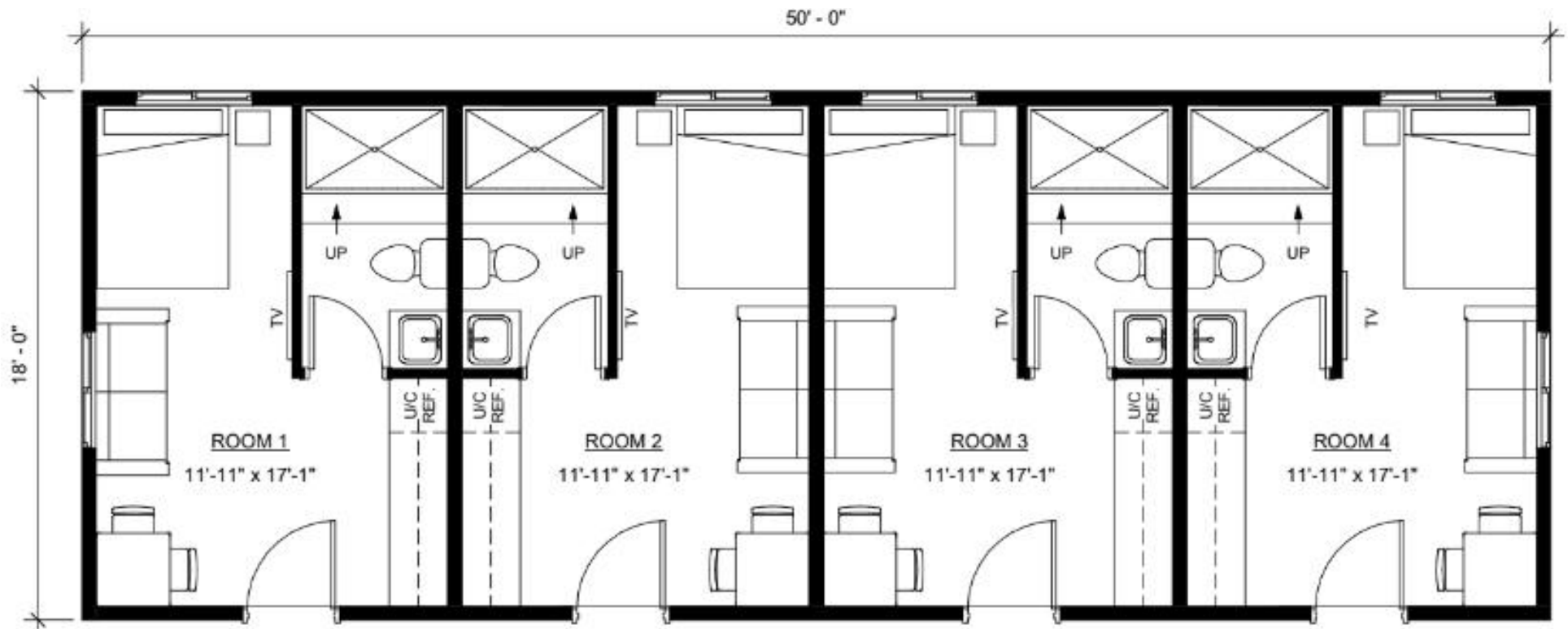






**4-Plex Unit**  
**18' x 50'**  
**900 sqft**

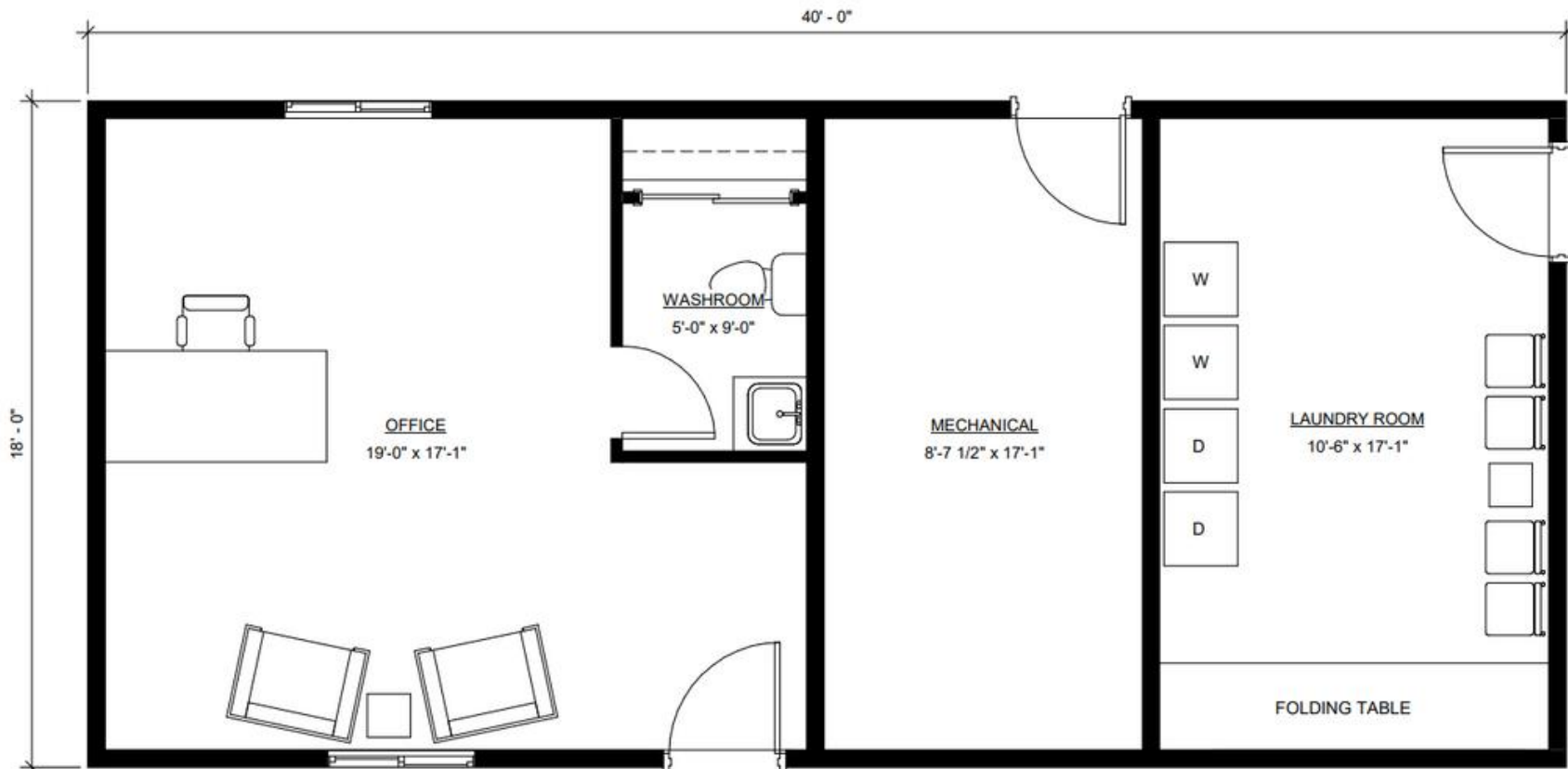
*Contact our sales team*





**Office & Laundry Unit**  
**18' x 40'**  
**720 sqft**

*Contact our sales team*







## Washroom & Shower Units

All Hytek Washrooms are completely with washrooms, showers, laundry and a mechanical / storage space.

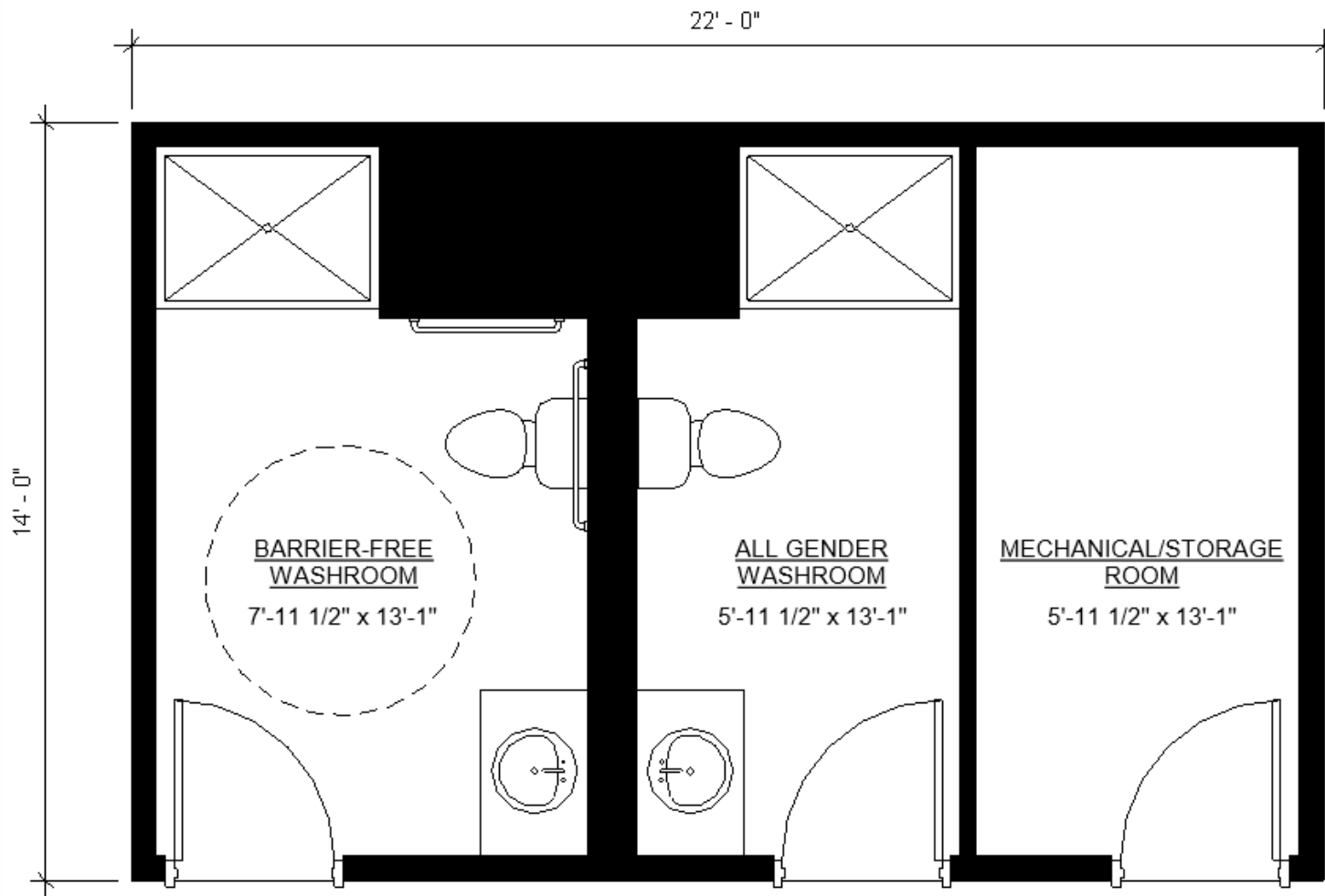
Perfect for campgrounds, golf courses, parks, worksites, etc. Available for 4 season capabilities & handicap accessibility.

- **14' x 22' Washroom & Shower Unit**
- **16' x 26' Beach Washrooms Unit**
- **14' x 35' Campground Showers & Washrooms Unit**
- **12' x 14' Lakelot Washroom Unit**
- **14' x 14' Golf Course Washroom Unit**
- **14' x 30' Cardlock Showers & Washrooms Unit**









## 14' x 22' - Washroom & Shower Unit

### 308 sqft

Contact Our Sales Team (Self Contained Un-Available)

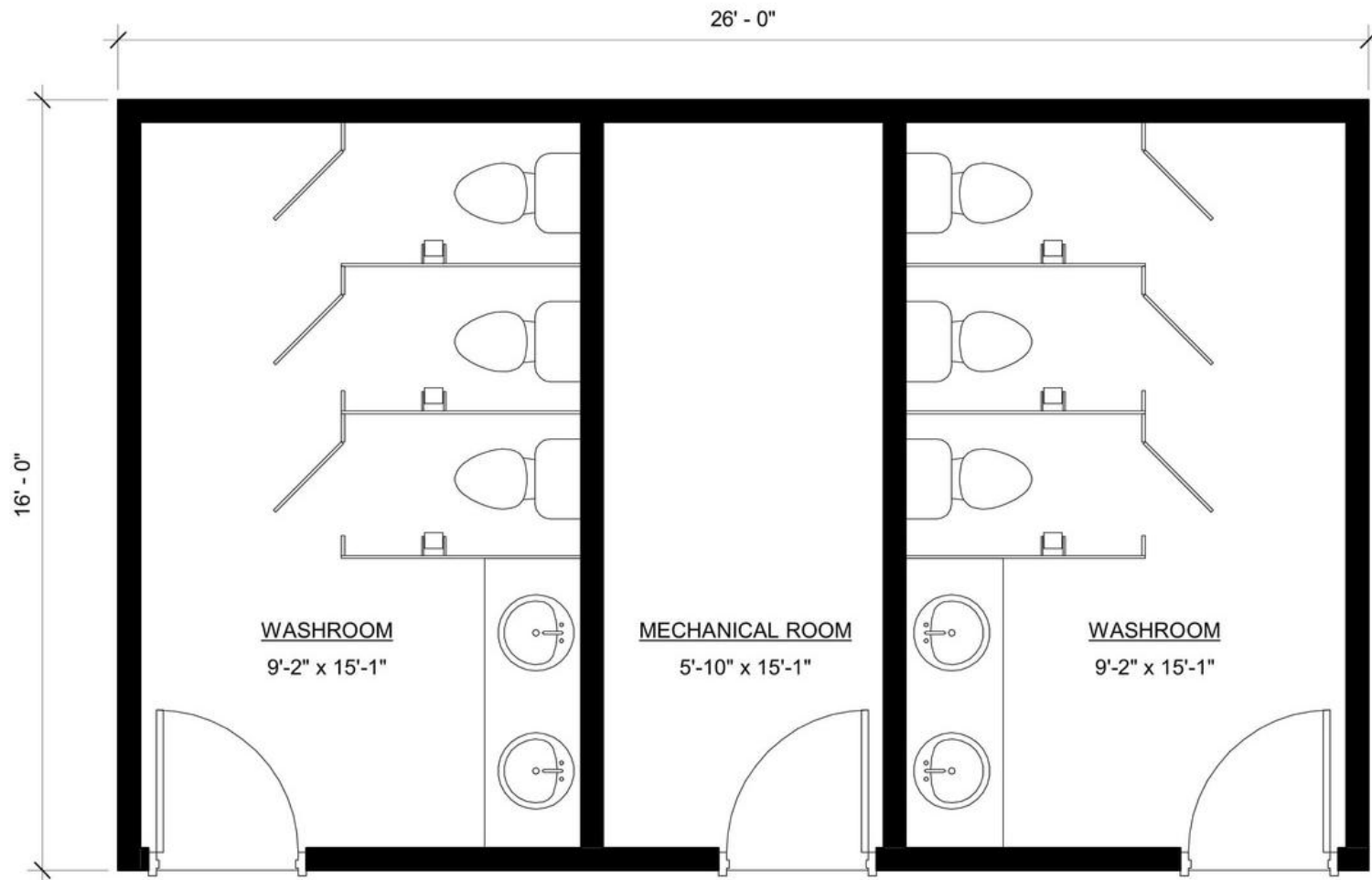
#### Includes:

- Commercial Metal Doors
- PVC Panel Walls

#### Upgrades Available:

- Metal Roof & Exterior
- Rodent Protection Package





## 16' x 26' - Beach Washrooms Unit

### 416 sqft

Contact Our Sales Team (Self Contained Un-Available)

#### Includes:

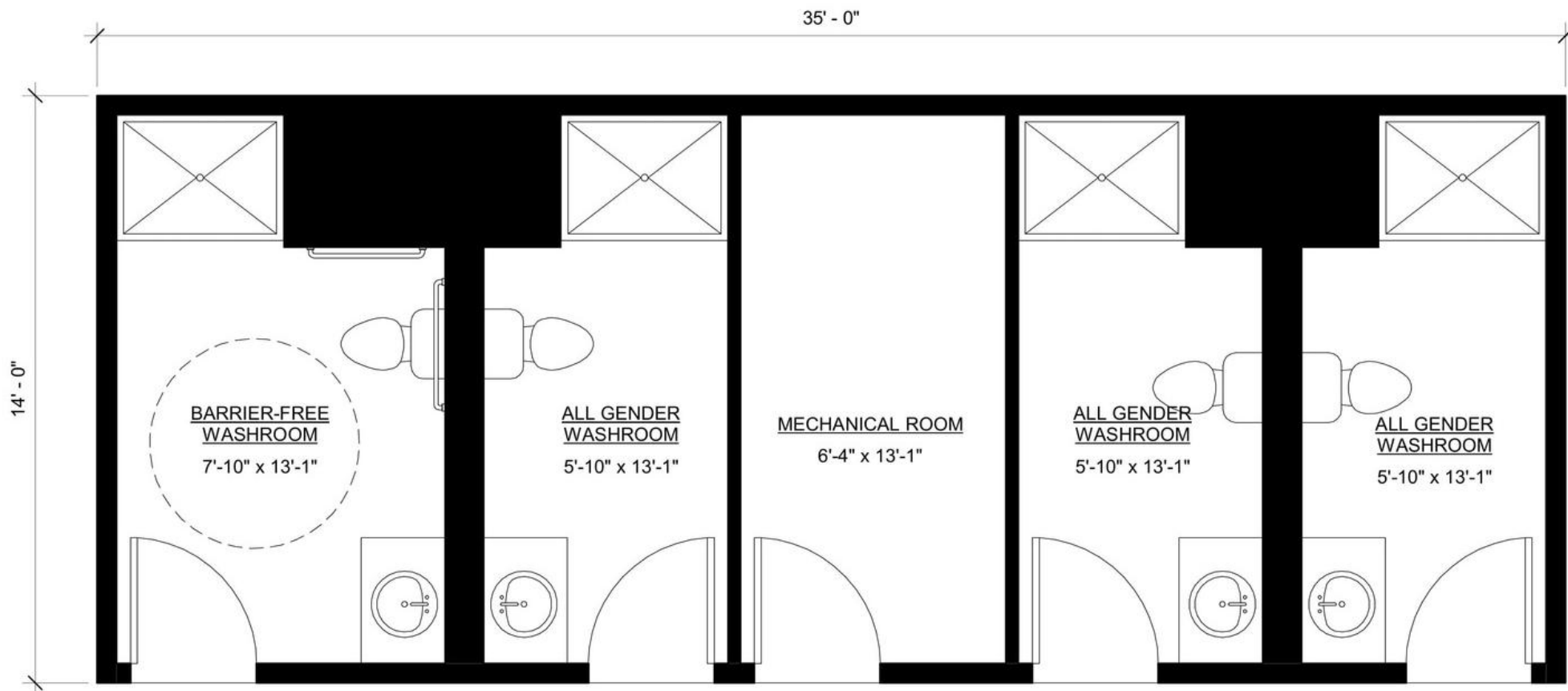
- Commercial Metal Doors
- PVC Panel Walls

#### Upgrades Available:

- Metal Roof & Exterior
- Rodent Protection Package







## 14' x 35' - Campground Showers & Washrooms Unit 490 sqft

Contact Our Sales Team (Self Contained Un-Available)

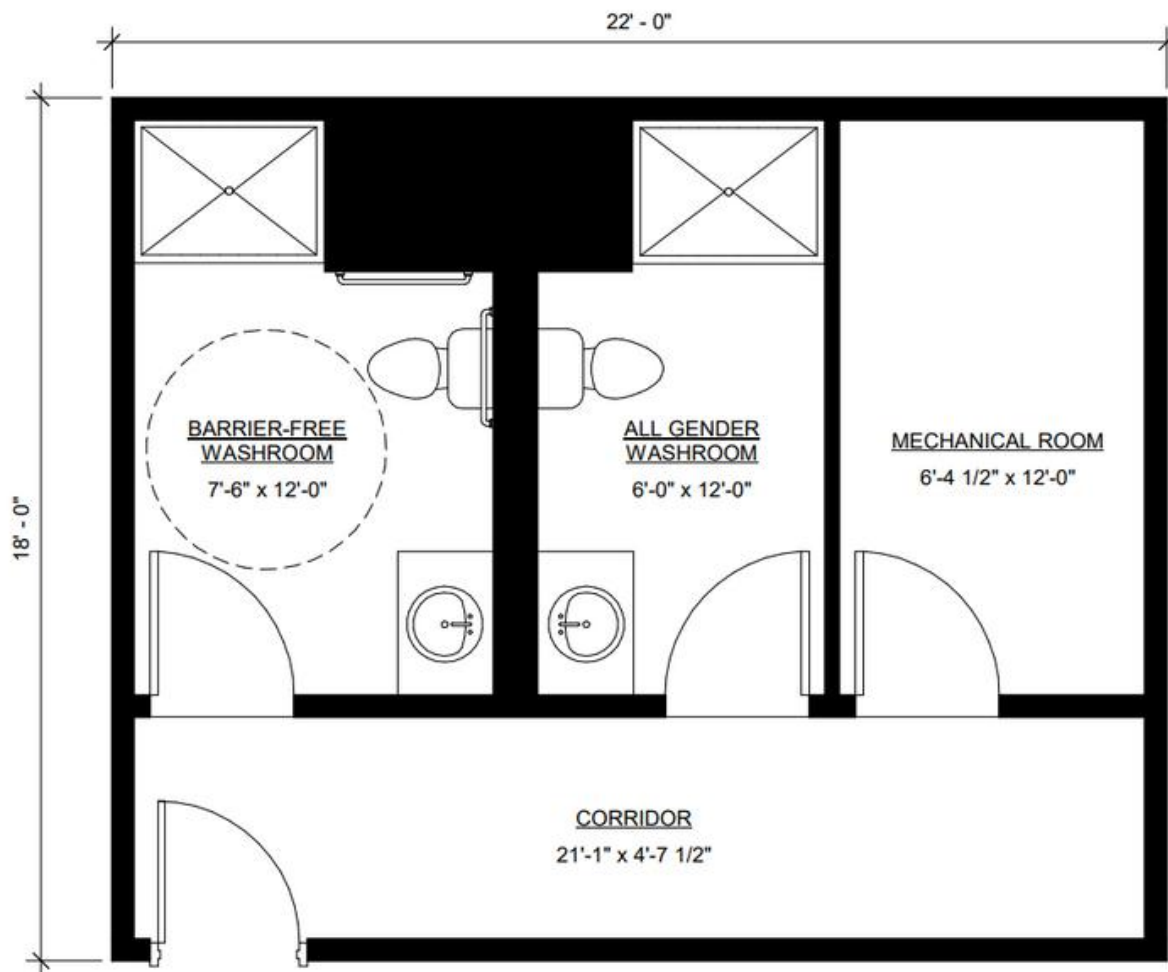
### Includes:

- Commercial Metal Doors
- PVC Panel Walls

### Upgrades Available:

- Metal Roof & Exterior
- Rodent Protection Package





## 18' x 22' - Cardlock Showers & Washrooms Unit 396 sqft

Contact Our Sales Team (Self Contained Un-Available)

### Includes:

- Commercial Metal Doors
- PVC Panel Walls

### Upgrades Available:

- Metal Roof & Exterior
- Rodent Protection Package





**12' x 14'**  
**Lakelot Washroom Unit**  
**168 sqft**

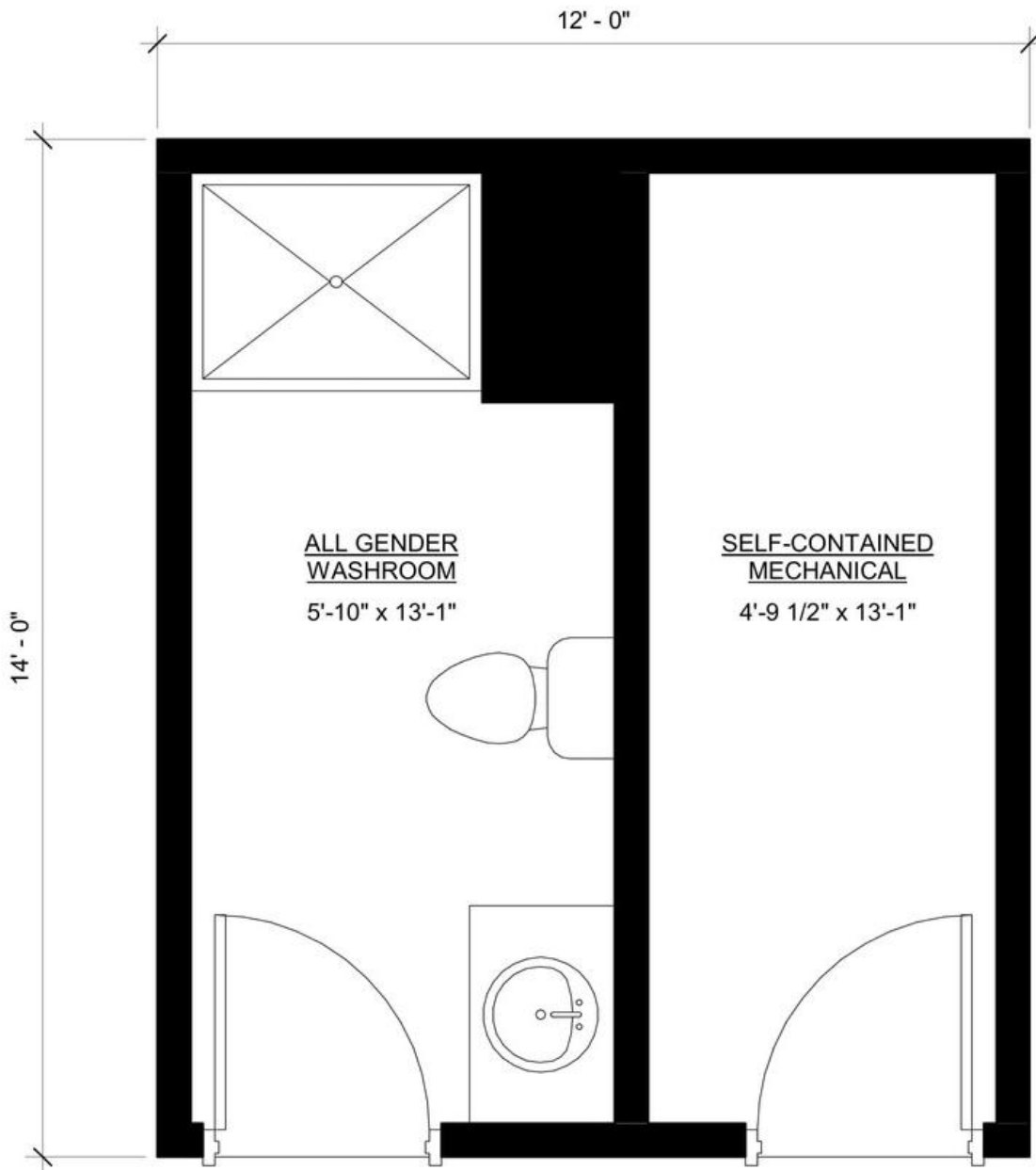
*Contact Our Sales Team  
(Self Contained Available)*

**Includes:**

- Commercial Metal Doors
- PVC Panel Walls

**Upgrades Available:**

- Metal Roof & Exterior
- Rodent Protection Package
- 200 Gallon Self-Contained Setup



**14' x 14'**  
**Golf Course Washroom Unit**  
**196 sqft**

*Contact Our Sales Team  
(Self Contained Available)*

**Includes:**

- Commercial Metal Doors
- PVC Panel Walls

**Upgrades Available:**

- Metal Roof & Exterior
- Rodent Protection Package
- 200 Gallon Self-Contained Setup

